

Adjusting Nut

Discharge Head Assembly

Pulley

Oil-Can Assembly

Spindle Assembly

Head Discharge

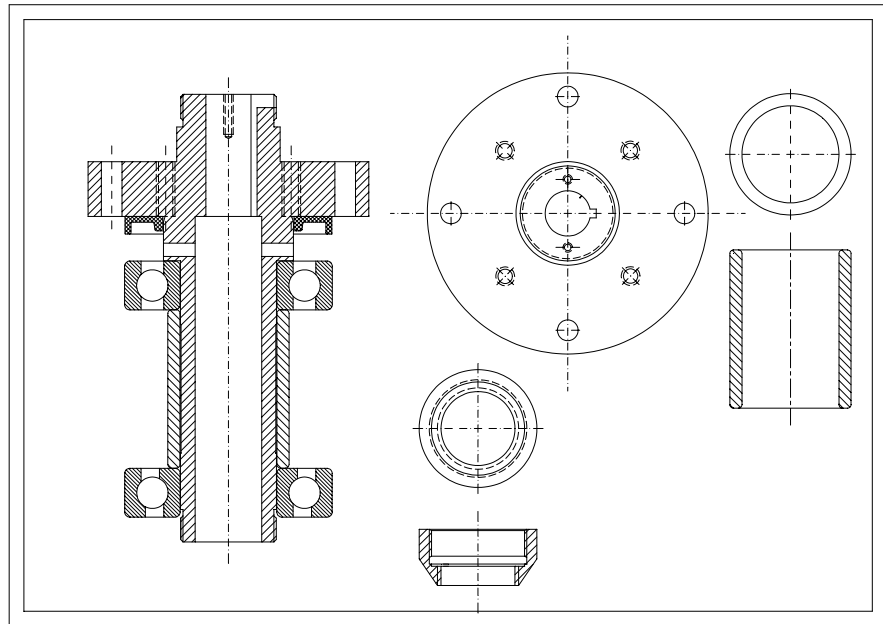
Throttle Bushing

I- beams used to support and align the pump at the ground or the well

Please refer to the "Operating Requirements" – "Materials List" and "Instructions – Assembly Description" Sections for more details.

In case where **hollow shaft motor** is used, then the oil can assembly and spindle assembly with pulley and adjusting nut is not needed.

Spindle Assembly



Note:

1. In this case, movement is achieved by using V-Belts from the Motor and/or Diesel engine to the pulley. The second option, is to use a vertical Motor, in which case the Oil-Can assembly is not needed.